

Together with Love, we can Inspire, Discover and Thrive

Attendance

'We expect all children on roll at Grampound Road of The Rainbow Multi Academy Trust to attend school every day, when the school is in session, as long as they are fit and healthy enough to do so. We expect our children's' attendance to be at least 96%. We do all we can to encourage the children to attend, and to put in place appropriate procedures. We believe that the most important factor in promoting good attendance is the development of positive attitudes towards school. To this end, we strive to make our school a happy and rewarding experience for all children' (Attendance Policy).

Attendance is monitored daily, we work in partnership with families to improve attendance and to support families.

Missing days at school means missing out on...

- * Learning
- * Friendship
- * Achieving the best possible grades
- * Personal development
- * Opportunities

We publish our attendance figures weekly and we are please that our attendance is generally very good, so I would like to say thank you to all our parents and carers.

Our attendance policy can be found in our website.

We would like to wish Mrs Maker all the best in her new job. We have loved working with Mrs Maker and we will all really miss her.

THE GOOD SAMARITAN



Our Good Samaritan awards this week go to

Pendeen Class– Grayson for helping others when they are upset

Trevose Class- Nalani - for helping your friends with their learning.

Tater Du Class- Elwin for always being a supportive partner to work with

Wolf Rock Class – Hayleigh - for volunteering to keep the playtime equipment trolley tidy all week.

Class Transitions

Children will have a transition session in their new class on the 9th July. This will give the children a chance to spend time with some new children and with the new teachers. We normally plan activities based around getting to know each other. Typically, by the end of the sessions, children feel more confident about the changes ahead. We recognise that some of our children will need additional transition sessions and the teachers will contact those parents/carers directly.



★ STARS OF THE WEEK ★

Class Name	Star of the week	Values Trust	Whole Class
P E N D E E N	Jacob - for coping so well with staying calm in class 	Evelyn - we can trust you to work hard 	For all working really hard in your topic lesson about climates around the world
T R E V O S E	Evie - for working incredibly hard in maths this week. 	Lerryn - because we can trust you to always try your best.	For excellent observations and using scientific vocabulary in our science lessons. 
T A T E R D U	Harry - for working so hard in typing club 	Jamie and Ollie because I was able to trust you both to work hard in RE 	For some wonderful handwriting in literacy and fantastic teamwork in science
W O L F R O C K	Arlo - incredible piano playing which impressed so many staff. 	Alice - can always be trusted to be a fantastic role-model. 	Huge improvement in the delivery of the play in rehearsals, especially the singing.

Roseland Printing Workshop

Yesterday, 3 of our pupils took part in a creative printing workshop at The Roseland School as a part of their transition programme.

We were shown how to use pieces of material, card and leaves to layer onto a metal board and use different colour paints and then transfer this onto paper using the printing press. The finished results were amazing.

This was a great day for pupils from the 10 feeder schools to Roseland to get to meet each other again before their transition in September.

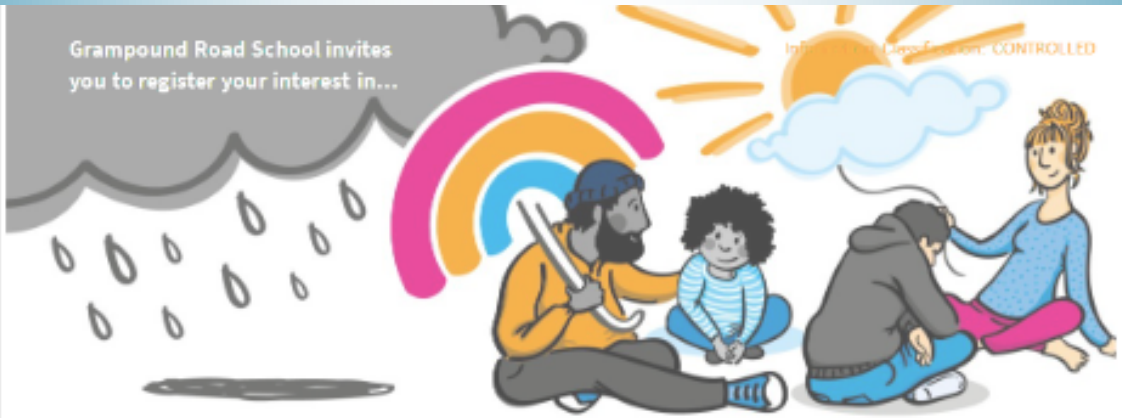
We will make a display in school of their artwork so that the rest of the school can see it.

I would also like to say to the 3 pupils how proud I was of their behaviour and the way they conducted themselves while out for the day and for making the day so



Grampound Road School invites you to register your interest in...

Information: 01326 371111 | www.grpschool.co.uk



SPACE

Supporting parents and children emotionally

SPACE is a new **free** programme for **any parent or carer** who wants to better understand and support their children's emotions, as well as their own.

- Understanding what is meant by a Trauma Informed approach
- Understanding toxic stress and the flight/fight response
- Practical approaches to support children to regulate their emotions
- Healthy coping strategies for dealing with stress
- Managing different emotions
- Understanding behaviour
- Building resilience in ourselves and our children
- Adopting appropriate expectations of children
- Enhancing your ability to provide nurturing care



To register your interest or find out more, please email

HEADSTART
KERNOW



CORNWALL
COUNCIL
Council of Cornwall

Together
for Families

COMMUNITY
FUND

This face-to-face programme will cover:

THE
READING
AGENCY

2024

Summer Reading Challenge

Delivered in partnership with libraries



Join FREE
at your
library

Get
rewards
for
reading!

summerreadingchallenge.org.uk

Runs Sat 6th July - Sat 14th Sept
FREE to join at St Austell Library!

Read six books to collect Scratch 'n' Sniff stickers and fun prizes!

**AND a medal and certificate
when you complete the challenge!**



Illustration by Helen Cook. Image courtesy of St Austell Library. All © The Reading Agency 2024

Dates for your diary

June

Friday 21st June-Wolf Rock Hall for Cornwall
Friday 21st June—London 2025 deposit deadline

July

Monday 1st July—Eden Project Pendeen and Trevoze (TBC)
Monday 8th July—School Reports to go to parents/carers
Wednesday 10th July—Athletics Yrs 4,5,6 @ The Roseland
Monday 15th July-Rainbow colour run
Thursday 11th July & Friday 12th July-School Play
Monday 8th July school Repots to Parents/Carers
Tuesday 16th July-Year 6 leavers Assembly
Wednesday 17th-Friday 19th July KS2 Porthpean residential

OFFICE OPENING HOURS

Office staff-Mrs Godwin 3 days per week, Mrs Scott and Miss Kennedy for 2 days per week

Monday 8.30am— 3.30pm (closed for lunch 12.30-1pm)

Tuesday 8.30am—3.30pm (closed for lunch 12.30-1pm)

Wednesday 8.30am—3.30pm (closed for lunch 12.30-1pm)

Thursday 8.30am—3.30pm (closed for lunch 12.30-1pm)

Friday 8.30am—3.30pm (closed for lunch 12.30-1pm)

The last day of term is Friday 19th July
Return to school Wednesday 4th September 2024

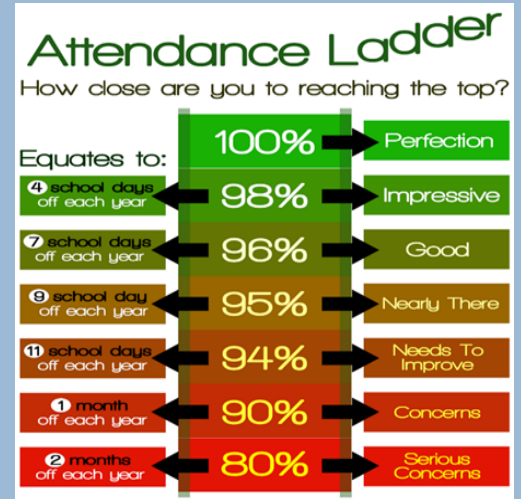
ATTENDANCE

Expected average attendance for a child is 96.1%. Our attendance figures for last week were as follows:

Pendeen: 90.05% Trevose: 98.33% Tater Du: 98% Wolfrock: 98.43%

Good attendance is important because: **Statistics show a direct link between under-achievement and absence** below 95% Regular attenders make better progress, both socially and academically. Regular attenders find school routines, school work and friendships easier to cope with.

GREEN Band 96% to 93% **AMBER** Band 93% to 90% **RED** Band Below 90% (PERSISTENT ABSENTEE) This is a government definition.



Communication

Having good communication between parents and schools can make a big difference to a child's education.

We offer several ways to contact us:

- Call the school office on 01726 882646
- Leave a message on the answer machine
Email grd-secretary@Rainbowacademy.org.uk (We will endeavour to answer your emails during office hours)
- Contact the class teachers through dojo
- Speak to the headteacher on the gate every morning
- Speak to the class teachers on the gate every afternoon (dismissing children is a busy time, all we ask is that you wait until children are dismissed)



Collection at home time

Any children not collected on time will go to the school office after 5 minutes at pick up and wait to be collected. Parents/Carers will need to go to the office to collect them from there and sign the Late Pick Up Register.

Eg. Trevose pick up time is 3.10pm if not collected by then they will be in the office from 3.15pm.

If your child is not collected by 3.30pm they will then go to the wraparound club. A fee will be charged via ParentPay for late pick up to cover staffing costs. Thank you.

Drop off and pick up times

Meet and greet at the gate at 8.45am

Once the gate is closed at 8.55am children arriving late must be signed in at the office by the adult (unless they walk to school then the pupil will sign in the book)

3.10pm Pendeen collected from pedestrian gate.

3.10pm Trevose collected from pedestrian gate.

3.15pm Tater Du and Wolfrock collected from pedestrian gate.

School uniform must be worn at all times.

Wraparound club

Our pre-booked breakfast club opens at 7.45am

Our pre-booked after school club closes at 5.00pm

Please call the school mobile 07442 731742 so we know you are waiting then we can collect your child or deliver them to you